

Recommended Settings For Adobe Acrobat 6.0 Professional



Providing flexibility, promoting uniformity

SERFF recommends the following Adobe Acrobat settings for using SERFF. A Portable Document Format (PDF) file attached in SERFF is recommended to be compatible to Adobe Acrobat 4.x format. If documents are created in a different format the attachments may not open correctly for other users. This document specifies the recommended Adobe Acrobat settings for viewing PDF files in the SERFF Application.

Instructions:

1. Open Adobe Acrobat
2. Choose “Edit”
3. Choose “Preferences” (Fig 1.1)

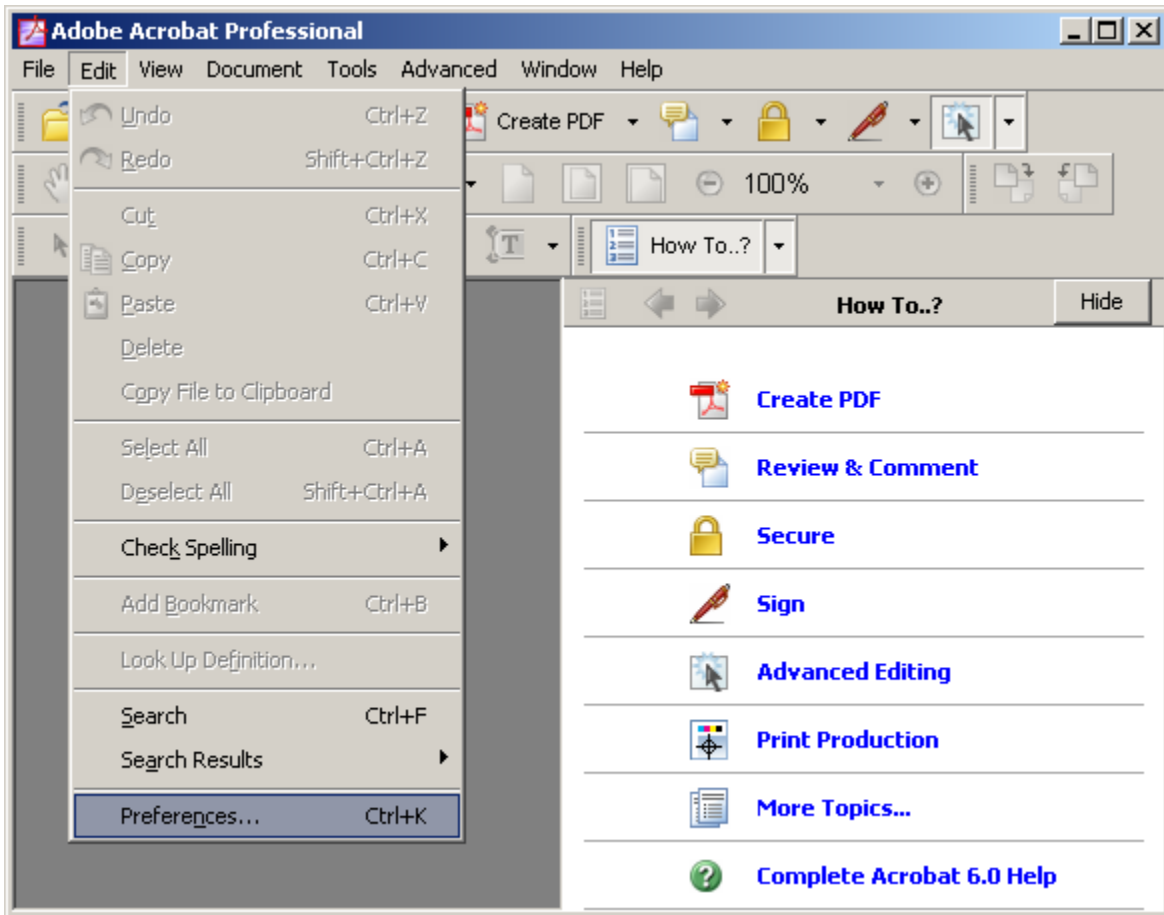


Figure 1.1: Adobe Acrobat “Preferences” in the “Edit” Menu

4. Select the “General” Option in the left hand panel (Fig 1.2)

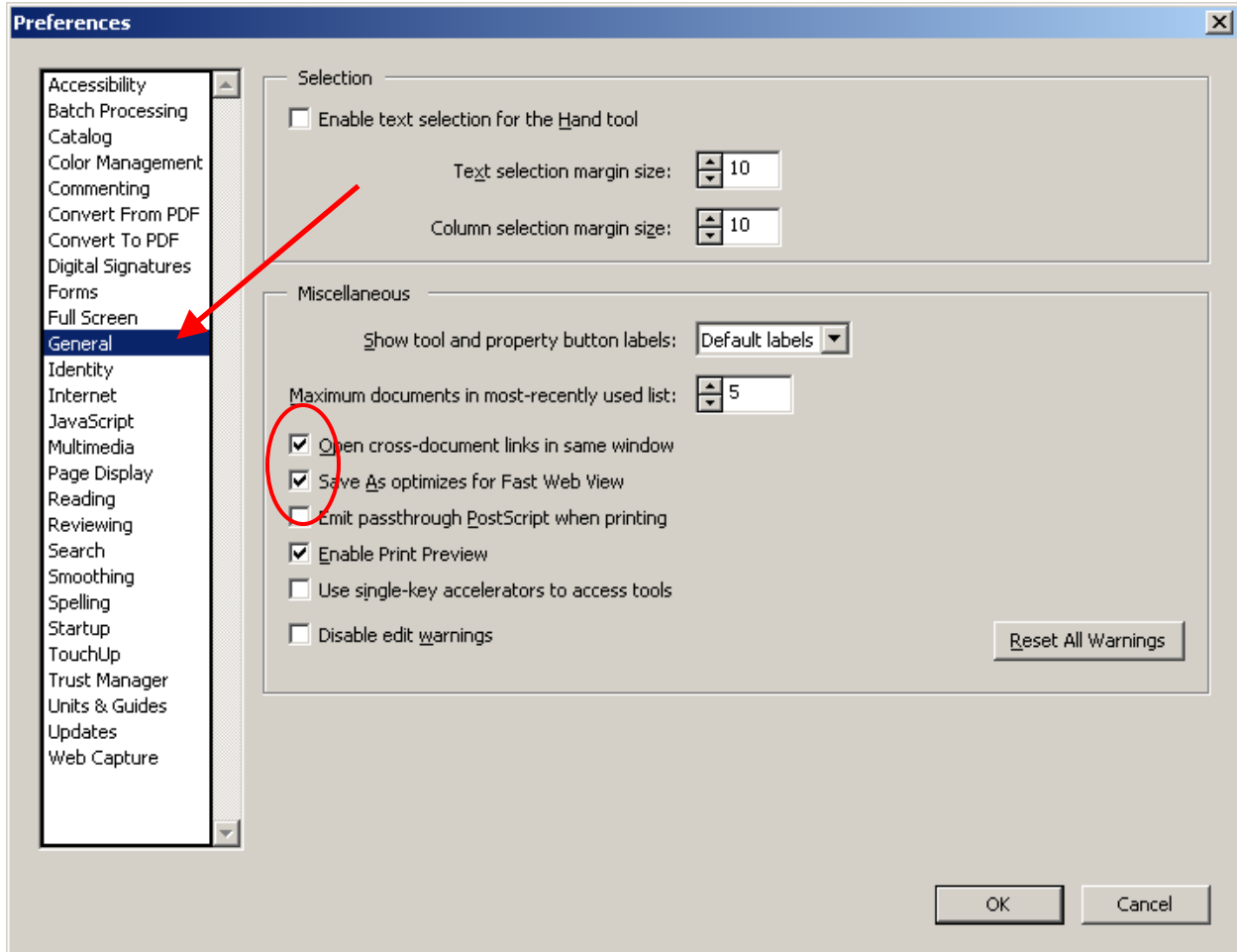


Figure 1.2: General option in the Adobe Acrobat Preferences

Miscellaneous

Check “Open cross-document links in same window”

Check “Save As optimizes for Fast Web View”

5. Select the “Internet” Option in the left hand panel (Fig 1.3)

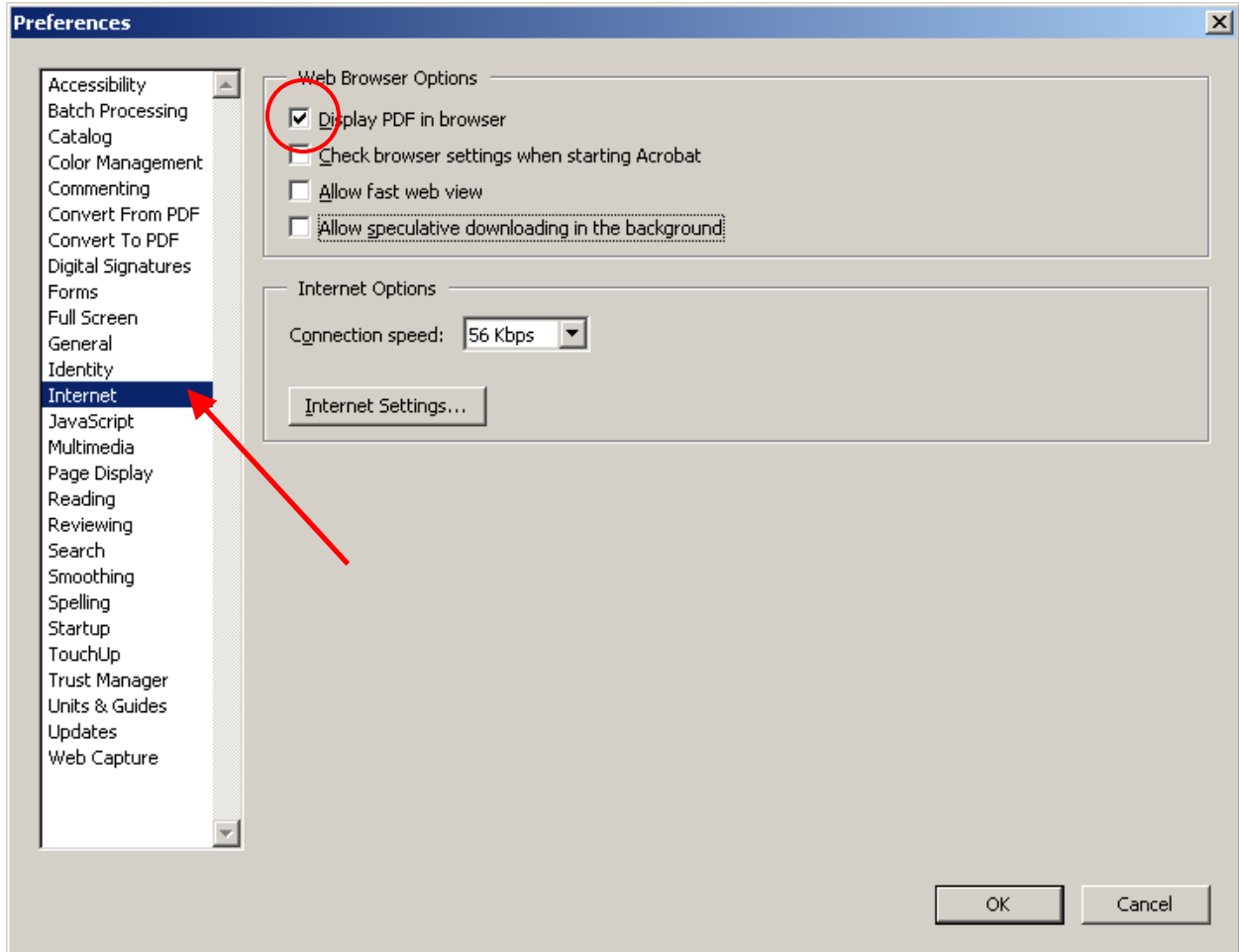


Figure 1.3: Internet option in the Adobe Acrobat Preferences

Web Browser Options

Check only “Display PDF in browser”

6. Select the “Updates” Option in the left hand panel (Fig 1.4)
7. Select “Manually” for Check for Updates (Fig 1.4)

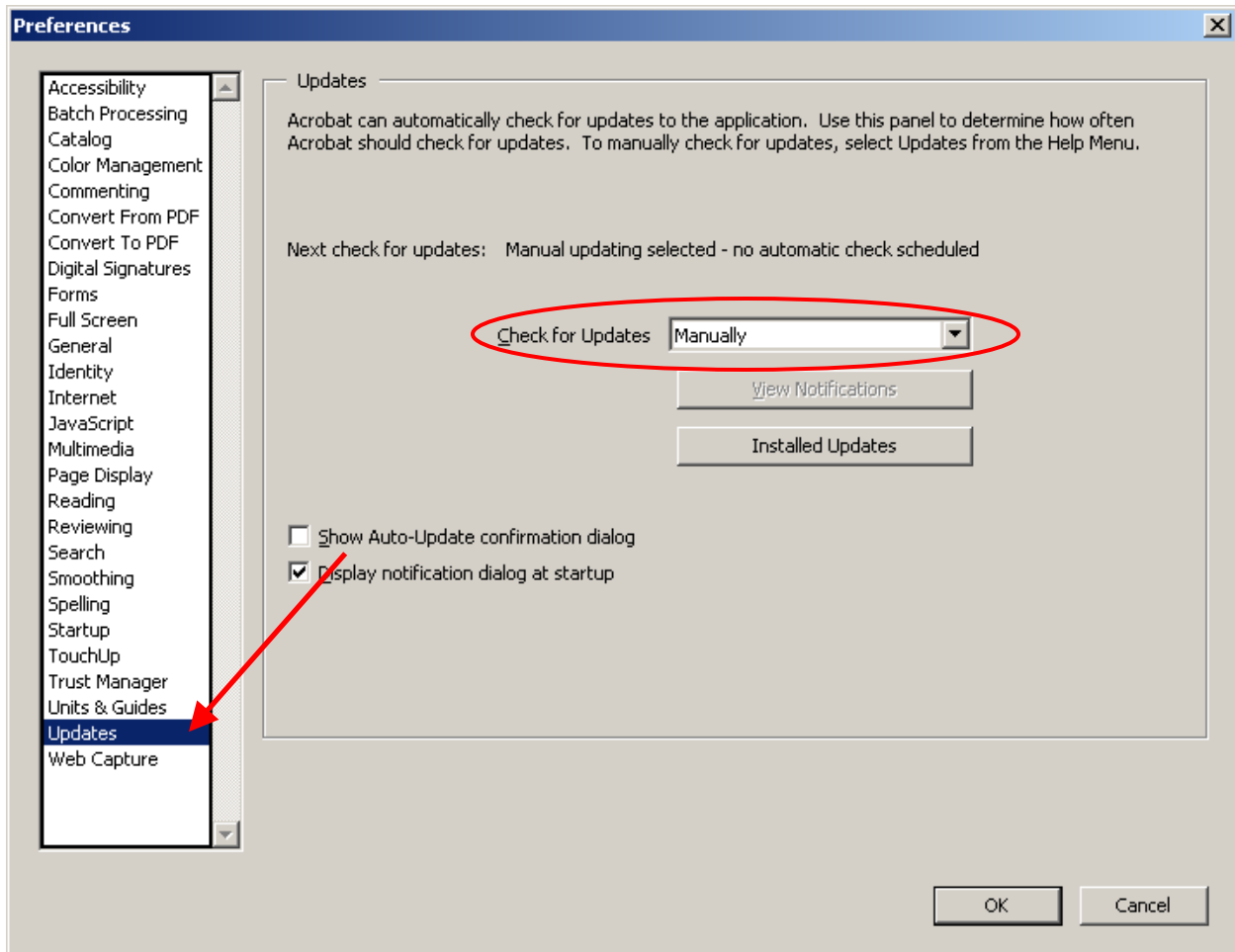


Figure 1.4: Updates option in the Adobe Acrobat Preferences

8. Click “OK”