

Recommended Adobe Acrobat Settings

For

Acrobat 5.0/5.05

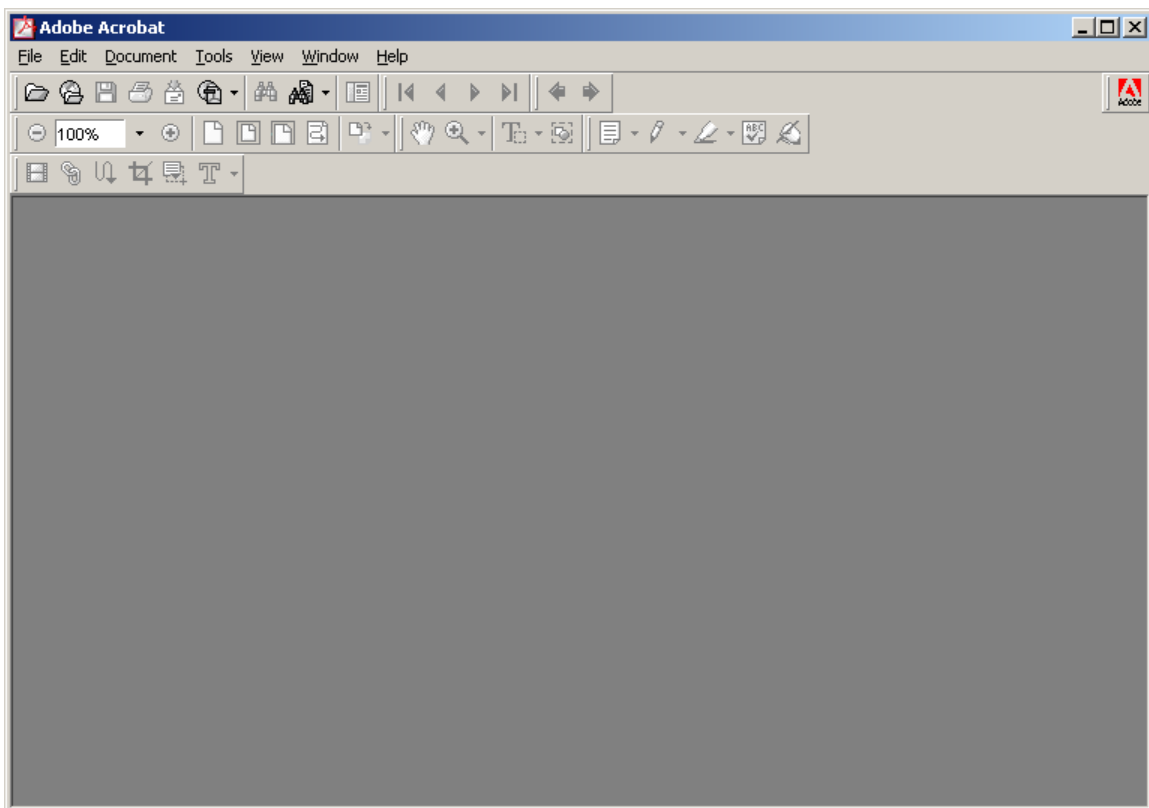


SERFF recommends the following Acrobat Settings for using SERFF. SERFF requires the use of attachments in Adobe Acrobat form 4.0 or higher. Sometimes the attachments will not open because a setting in Acrobat is incorrect.

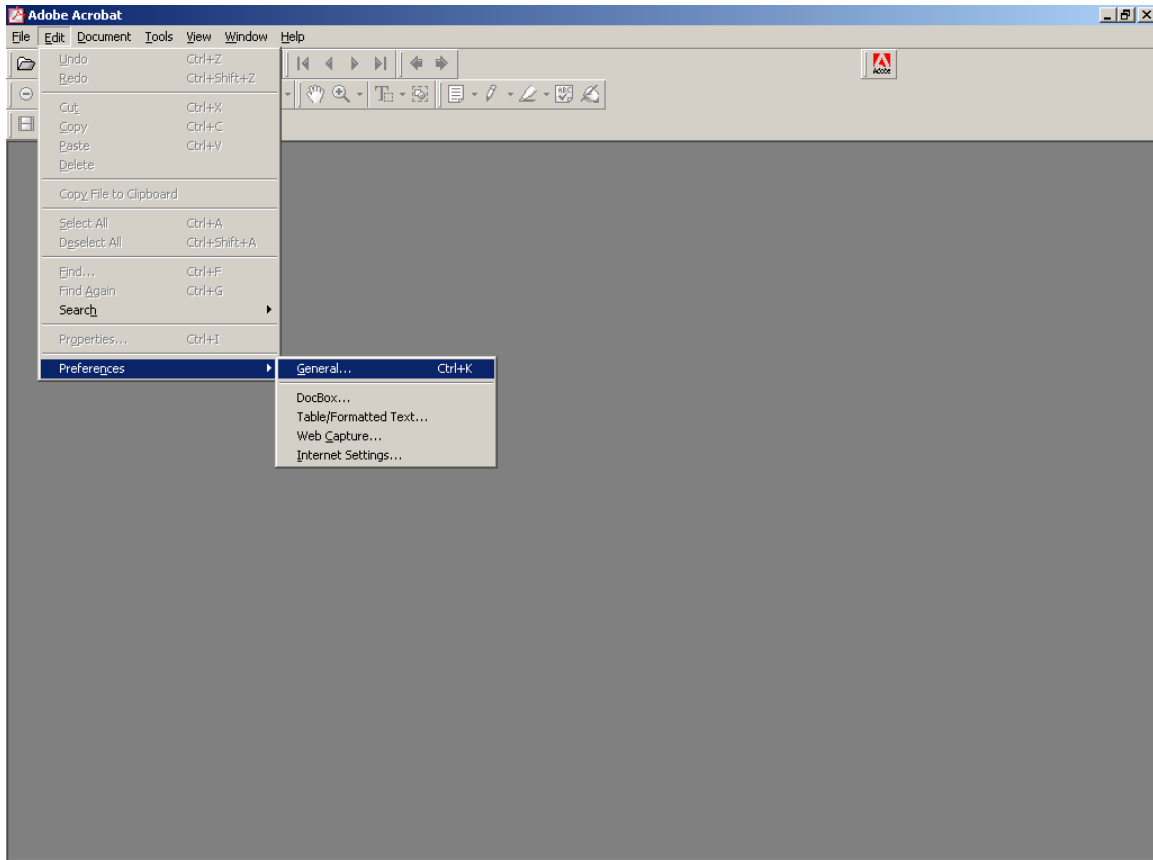
This document specifies the recommended Adobe Acrobat settings for viewing PDF files in the SERFF Application.

In Adobe Acrobat 5.0/5.05

1. Open Adobe Acrobat



2. Click Edit and Scroll to Preferences
3. Select General



4. Select the topic “Display” in the white space on the left hand side
5. Make sure the settings match the ones shown below:

Under Display:

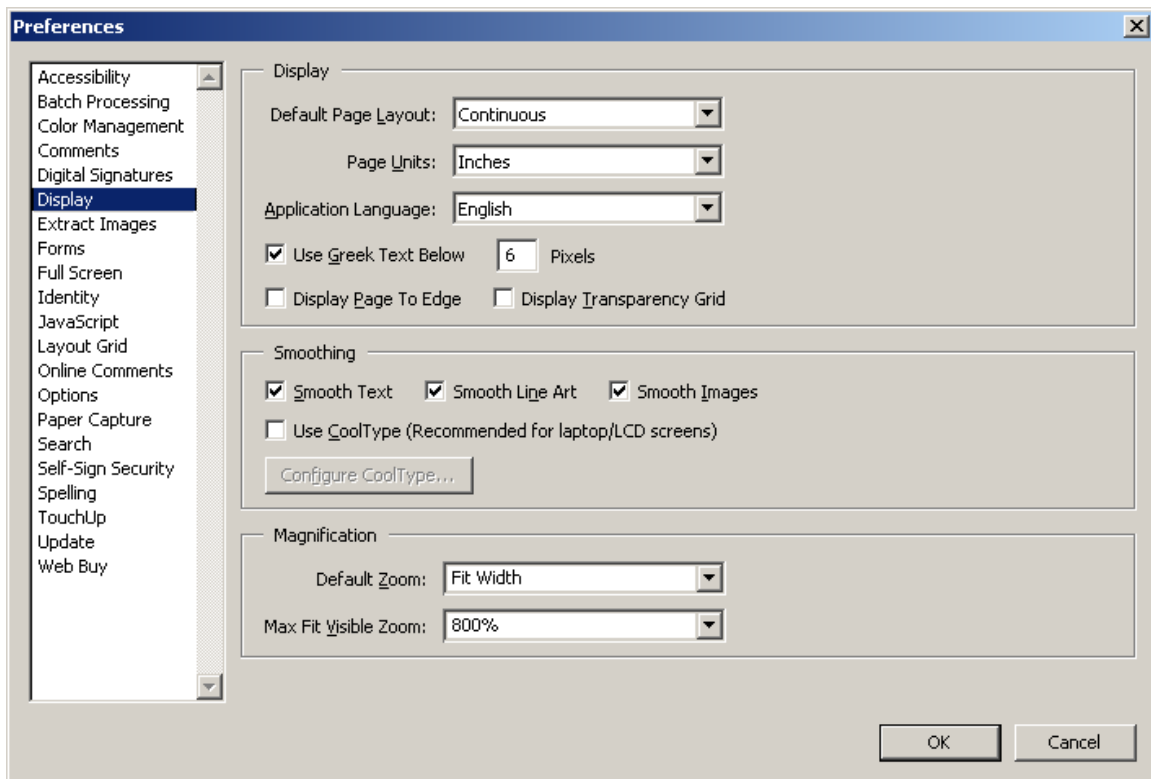
Default Page Layout is Continuous

Smoothing:

Check Smooth Text

Check Smooth Line Art

Check Smooth Images



6. Next select the topic “Options”
7. Make sure the settings match the ones shown below:

Web Browser Options:

Check the box “Display PDF in Browser”

Startup:

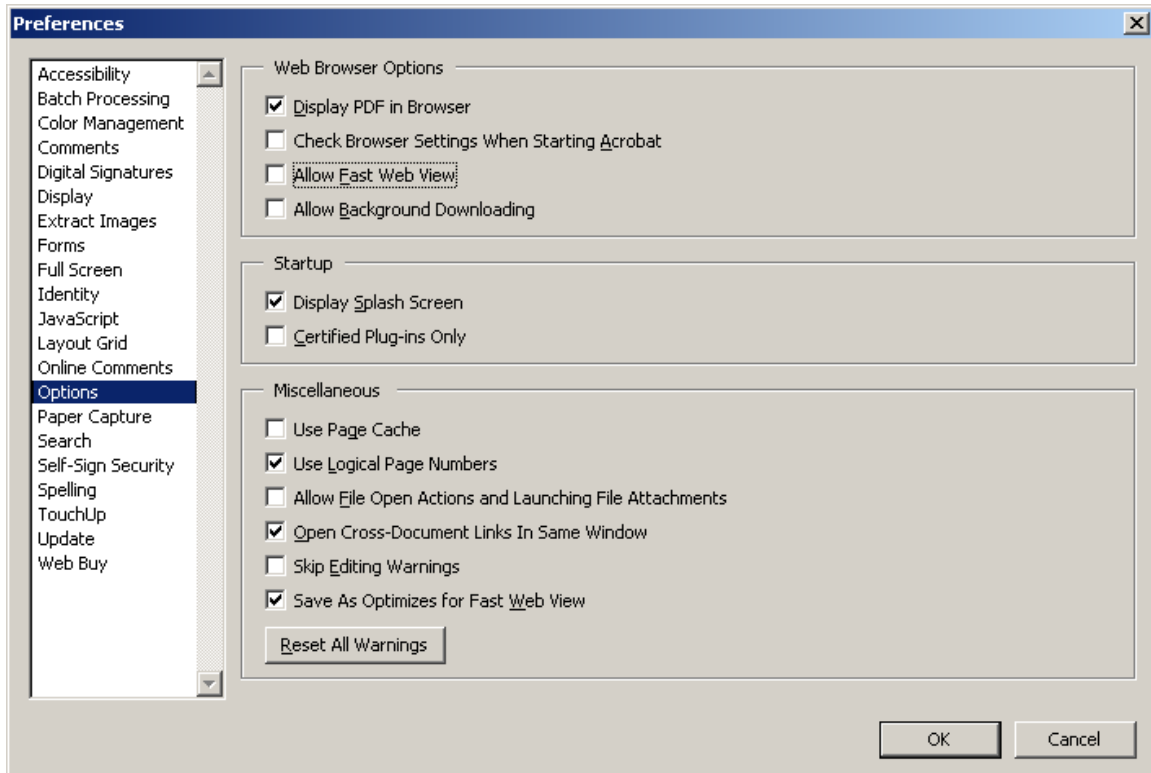
Check only “Display Splash Screen”

Miscellaneous:

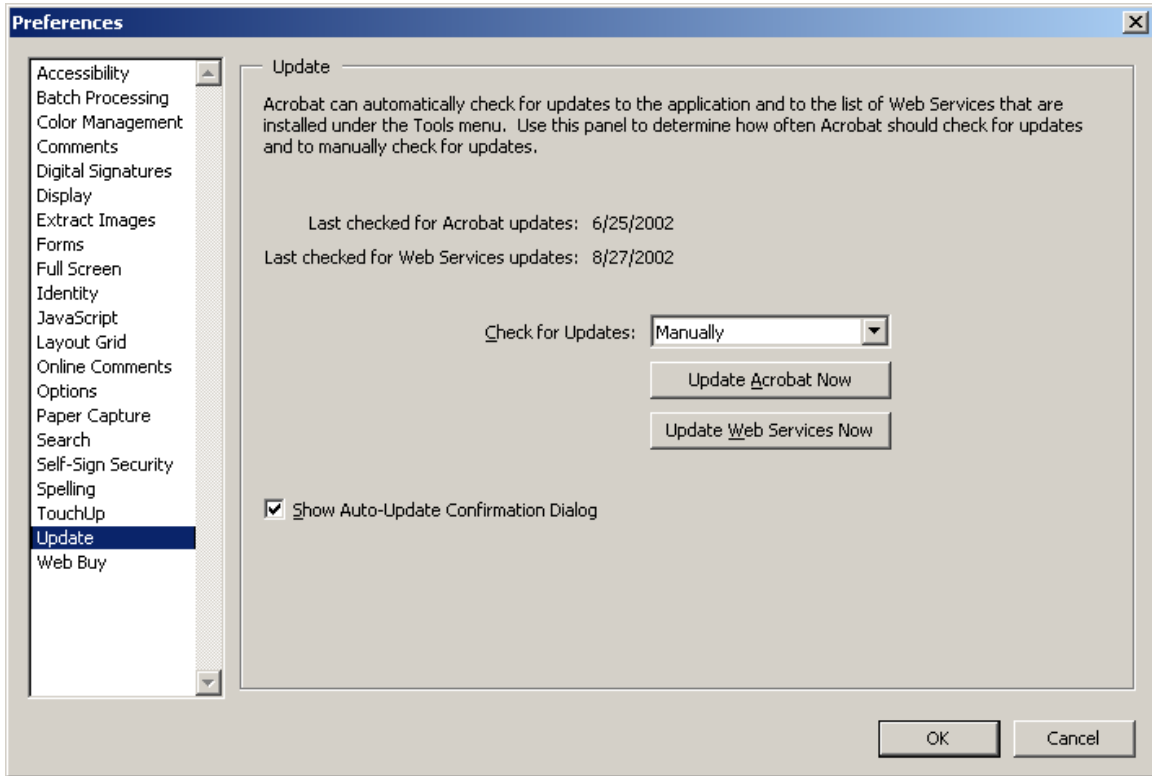
Check Use Logical Page Numbers

Check Open Cross Document Links In Same Window

Check Save As Optimizes for Fast Web View



8. Select the topic “Update”
9. Set “Check For Updates” to manually



10. Press “OK”